

# FOR LEASE

301 Halton Rd Suites I & J | Greenville, SC 29607

**FOR LEASE:**  
**Medical Office Space**

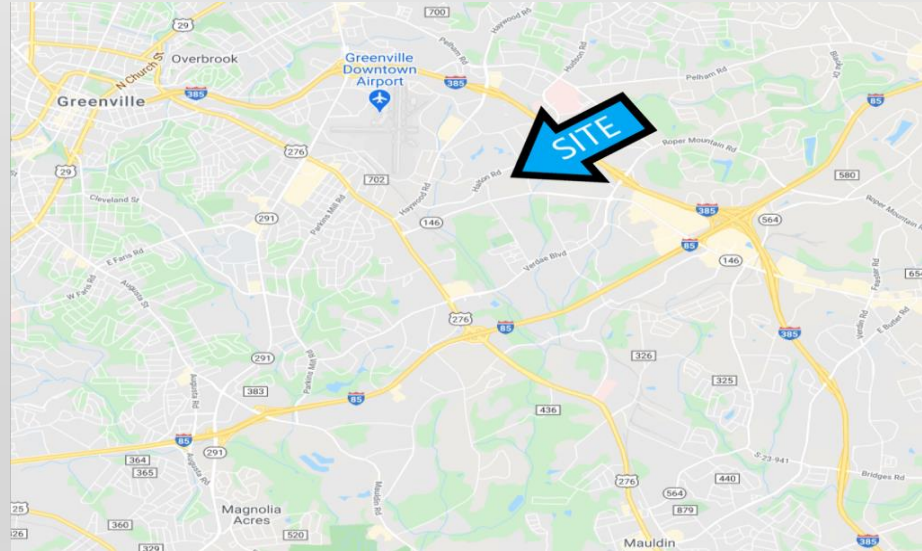
## EXECUTIVE SUMMARY:

### Space for Lease Summary:

Space Available:	3,170 SF
Space Type:	Medical Office/ Office
Asking Lease Rate:	\$16.00
Lease Type:	NNN
Available Date:	12/1/2020
Former Use:	Medical Office

### Medical Office Space Highlights:

- ❖ Existing floor plan works perfectly for Medical Office - See Floor Plan on Page 2
- ❖ Located in popular retail and office corridor between Haywood Rd and Woodruff Rd
- ❖ Population of 53,000 within 3 Miles expected to grow 8% between 2020-2025
- ❖ Building Signage Available



**Graham Mullikin**  
(864)-704-4490  
[graham@stoneandcompany.net](mailto:graham@stoneandcompany.net)  
1100A Rutherford Rd.  
Greenville, SC 29609

**Gordon Huey**  
(843)-330-0415  
[gordon@stoneandcompany.net](mailto:gordon@stoneandcompany.net)  
1100A Rutherford Rd.  
Greenville, SC 29609

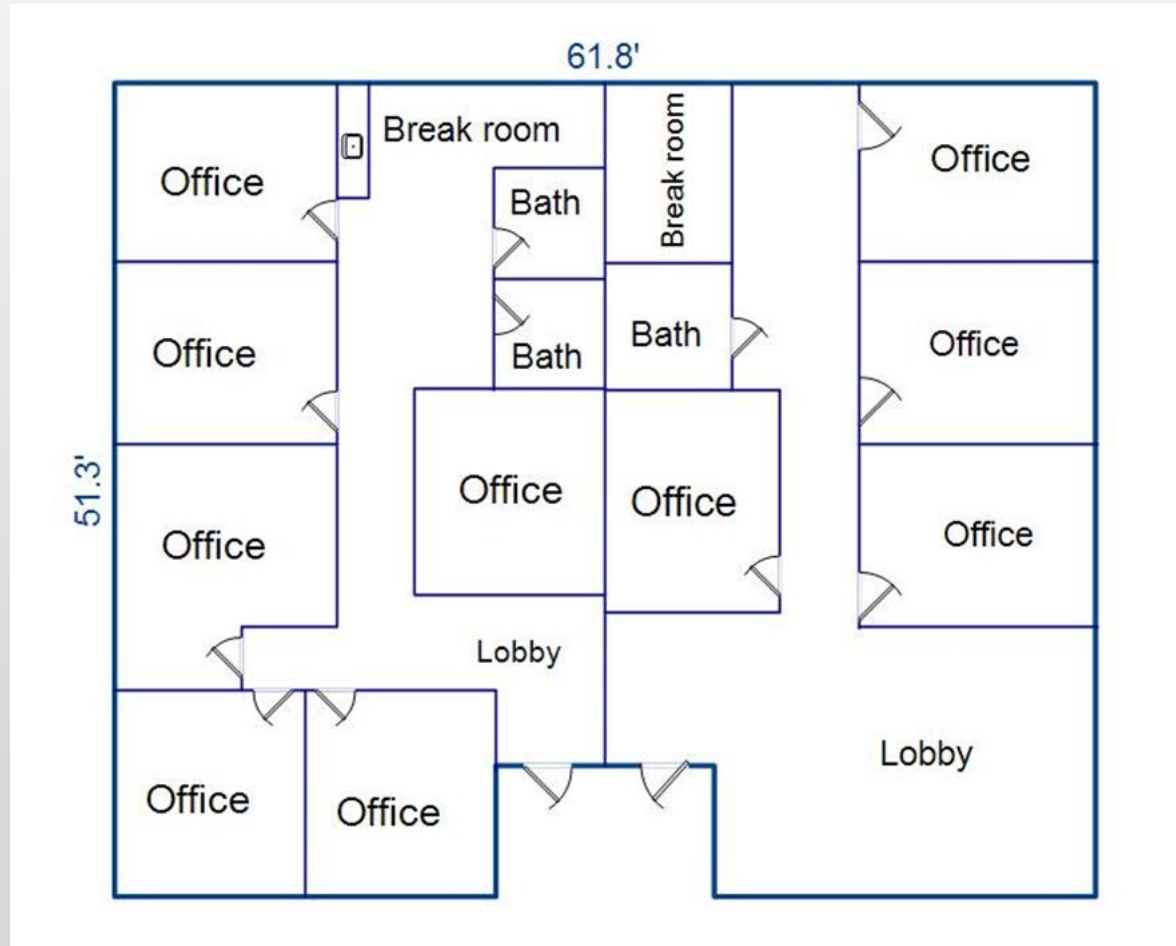
  
**STONE & COMPANY**  
— Real Estate —

# FOR LEASE

301 Halton Rd Suites I & J | Greenville, SC 29607

FOR Lease:  
Medical/Office Space

## Current Floor Plan:



Graham Mullikin  
(864)-704-4490  
[graham@stoneandcompany.net](mailto:graham@stoneandcompany.net)  
1100A Rutherford Rd.  
Greenville, SC 29609

Gordon Huey  
(843)-330-0415  
[gordon@stoneandcompany.net](mailto:gordon@stoneandcompany.net)  
1100A Rutherford Rd.  
Greenville, SC 29609