

Infill Residential Development Opportunity

North Main Area | Greenville, SC 29609

FOR SALE:
Residential Land

EXECUTIVE SUMMARY:

Investment Summary:

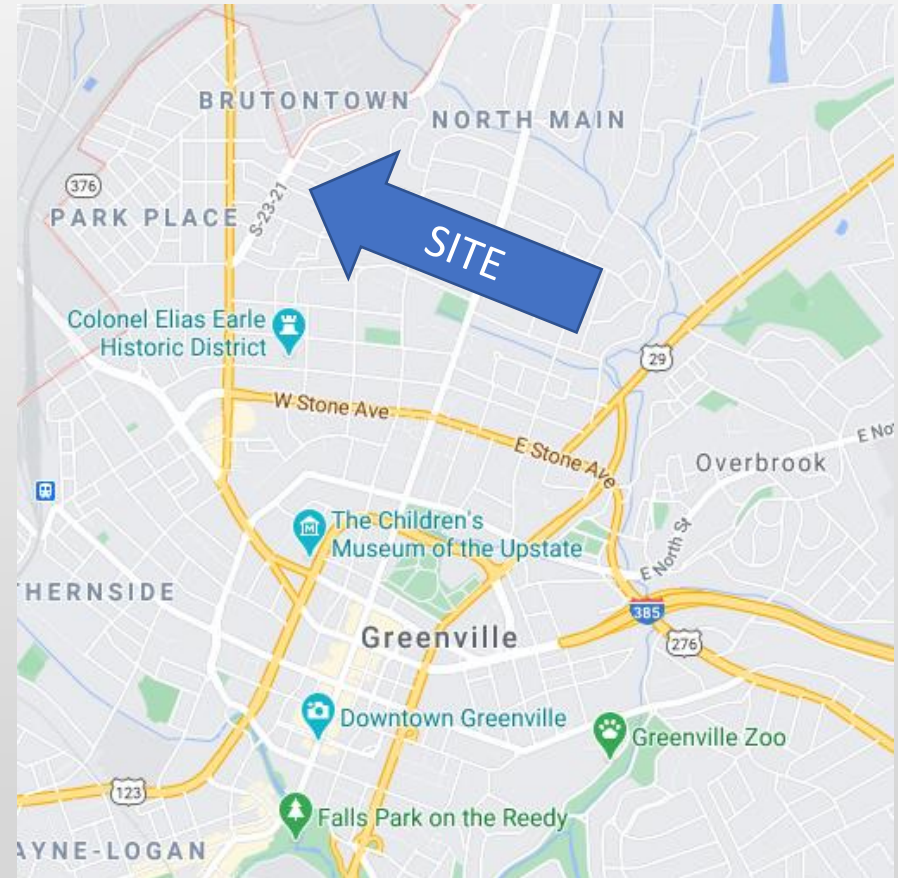
Sale Price:	\$1,175,000
Acres for Sale:	3.302
Land SF:	143,835
Zoning:	All Parcels Zoned RM-2 (Residential)
Max Density:	20 Units per Acre

Site Highlights:

- 24 individual parcels with multiple contiguous blocks
- Multiple lots able to be subdivided
- Improvements to sewer completed by City of Greenville in 2019
- Owner will consider take down schedule
- Public water & sewer – Utilities on Street

Location Highlights:

- Located between N Main St and Rutherford Rd
- 2 Miles from Greenville CBD
- Greenville County School Zoning:
 - Stone Elementary
 - League Middle
 - Berea High School



****See Next Page for Available Parcels**

Graham Mullikin

(864)-704-4490

graham@stoneandcompany.net

1100A Rutherford Rd.

Greenville, SC 29609



STONE & COMPANY

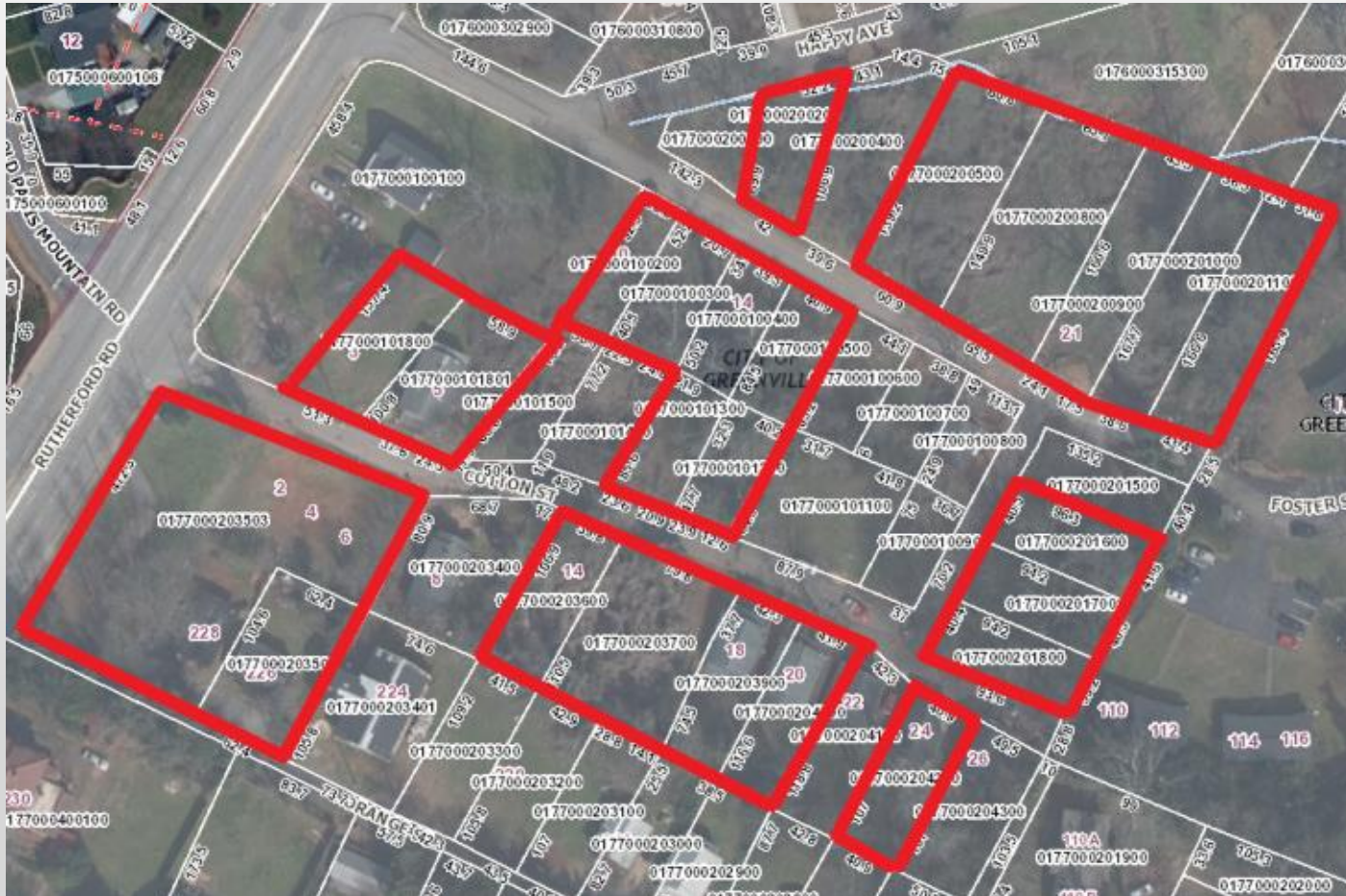
— Real Estate —

Infill Residential Development Opportunity

North Main Area | Greenville, SC 29609

FOR SALE:
Residential Land

Parcels Available for Sale Outlined in **RED**



Graham Mullikin
(864)-704-4490
graham@stoneandcompany.net
1100A Rutherford Rd.
Greenville, SC 29609



STONE & COMPANY
— Real Estate —